

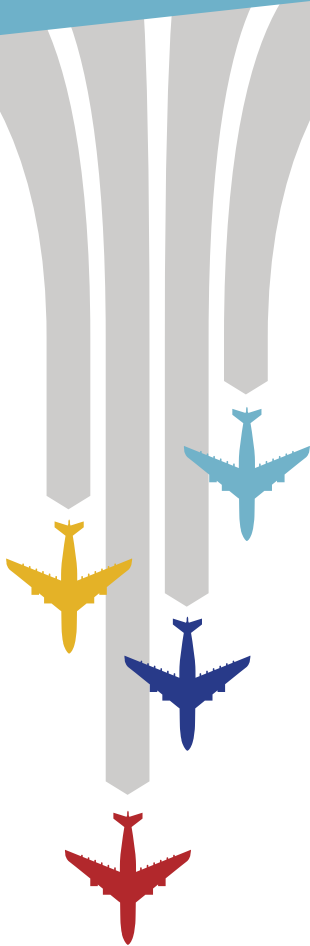
2022

# REPORT TO MEMBERS

---

Presented by the Association of  
Certified Fraud Examiners

# TABLE OF CONTENTS



03

LETTER FROM THE PRESIDENT

04

EXPANDING YOUR GLOBAL NETWORK

06

*OCCUPATIONAL FRAUD 2022:  
A REPORT TO THE NATIONS*

09

FEATURED RESOURCES AND REPORTS

11

RETURN TO IN-PERSON EVENTS

14

ACFE CHAPTERS

15

ACFE FOUNDATION

17

COMMITMENT TO THE COMMUNITY

19

MENTORING PROGRAM

21

FRAUD WEEK 2022

23

2022 AWARD WINNERS

25

WHAT'S AHEAD IN 2023





## LETTER FROM THE PRESIDENT

---

These past years have challenged us. Fraud forced us to navigate difficult new terrain while having to adapt to new technologies and work environments. Despite this, you chose to rise above it. You stepped forward to meet the challenges ahead of you and overcame them. The offerings of fraud tools and resources continue to improve thanks to the community and education you helped cultivate this past year.

You've served your communities, not only as fraud fighters, but also as anti-fraud ambassadors. You participated in and organized events around the globe to promote anti-fraud education and prevention. According to *Occupational Fraud 2022: A Report to the Nations*, fraud is being caught faster, resulting in smaller losses, and this is because of the work you have accomplished in your organization and community.

I am proud to recognize the dedication and perseverance of our members. With the ever-present threat of fraud, your commitment to remain at the forefront is crucial. Anti-fraud professionals are tasked with leveling the playing field, and even after years battling previously unseen obstacles, you continued advancing our profession. Alongside more than 90,000 fraud fighters worldwide, you chose not to tackle the challenge alone.

And together, we reached new heights.

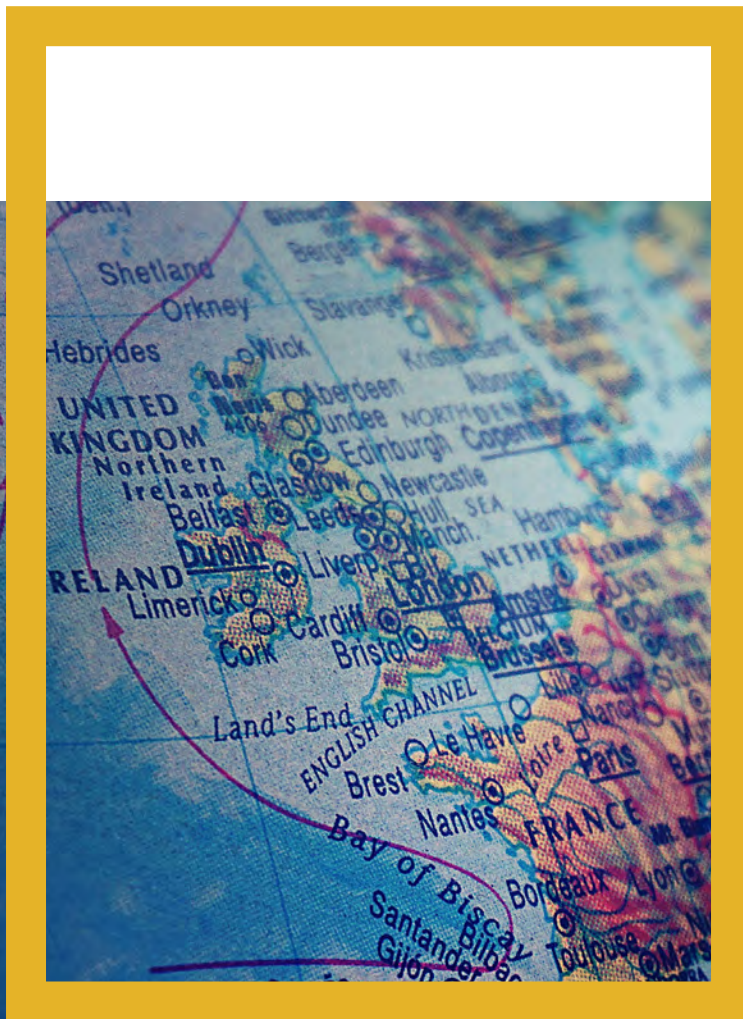
Bruce Dorris, J.D., CFE, CPA  
President and CEO



# EXPANDING YOUR GLOBAL NETWORK

As anti-fraud professionals know, leveraging a global network of Certified Fraud Examiners (CFEs) who are trained at the highest level is key to fraud detection and prevention. The world's largest anti-fraud community continued its expansion with ACFE membership surpassing **91,000** fraud fighters in 2022. Your membership highlights the very best of the anti-fraud profession.

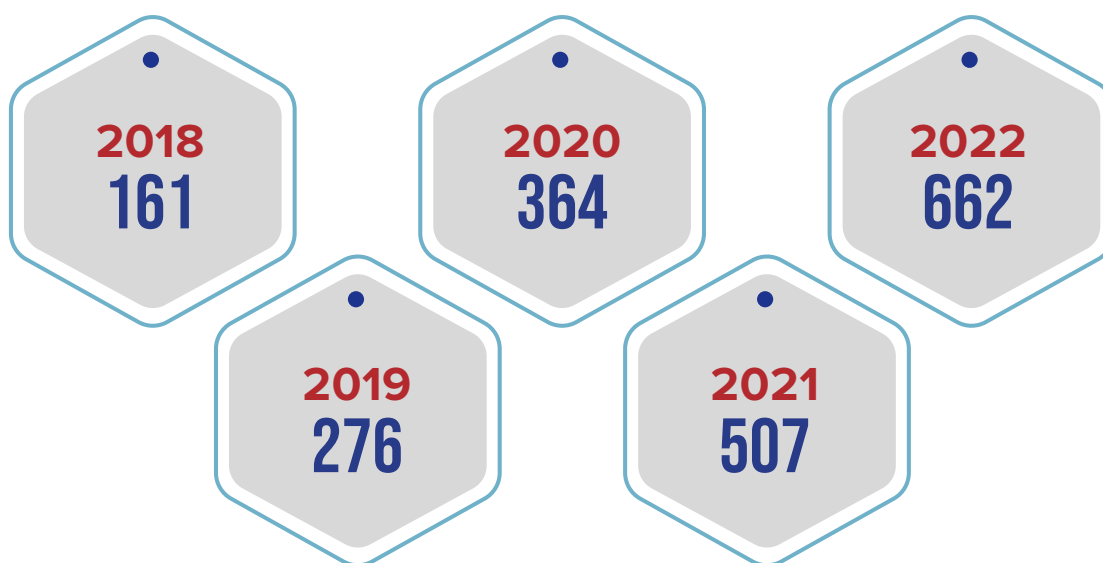
In 2022, there were **5,023** Associate members who became Certified Fraud Examiners.



# 90-DAY CFE EXAM CHALLENGE

The 90-Day CFE Exam Challenge — held three times per year — provides coaching and motivation to help associate members stay on track and achieve the goal of passing the CFE Exam in only three months. Utilizing specially designed study plans and live Q&A sessions with ACFE staff members, **662** ACFE members completed the challenge and became CFEs in 2022.

## Challenge Winners



## Certified Fraud Examiner Digital Badge

Communicating your achievements in an ever-expanding marketplace can be challenging. That is why the ACFE partnered with Credly, the largest and most-connected digital credential network, to provide you with a [digital version](#) of the CFE credential that can be used in email signatures or digital resumes, and on social media sites such as LinkedIn, Facebook and Twitter.

Utilizing the Digital Badge is free and provides you with:

- A verified, digital version of your credential
- Secure means of storing and promoting your accomplishment online
- An overview of the skills required to earn the CFE, so potential employers can understand the level of your expertise
- Additional labor market insights to assist you in your job search





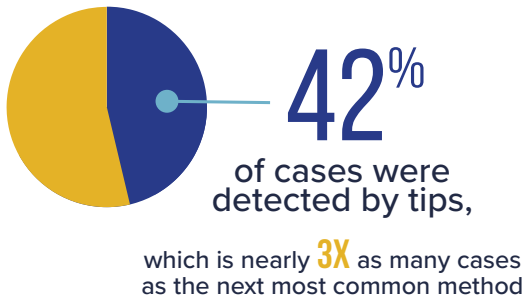
# ***OCCUPATIONAL FRAUD 2022: A REPORT TO THE NATIONS***

First published by the ACFE in 1996, the *Report to the Nations* is regarded as the most authoritative statistical resource available on occupational fraud. Data used in this year's report is based on the results of the ACFE 2021 *Global Fraud Survey* of Certified Fraud Examiners and represents fraud cases committed in 133 countries across 23 industry categories.

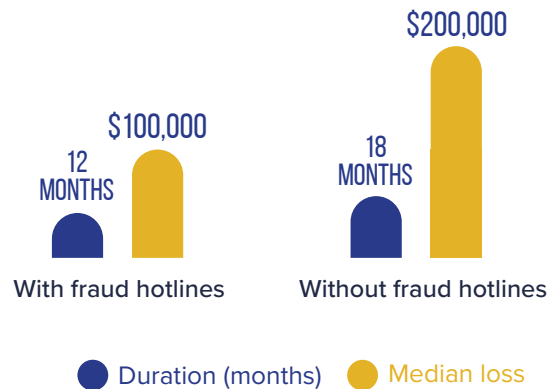
Utilizing data from 2,110 real cases of occupational fraud that were investigated by CFEs between January 2020 and September 2021, [\*Occupational Fraud 2022: A Report to the Nations\*](#) compiles statistics on the methods used to commit these types of crimes, how they were detected, characteristics of both the victims and the perpetrators, and ways in which victim organizations responded after the frauds were detected.

# Report to the Nations: Key Findings

## → ✈️ DETECTION



**ORGANIZATIONS WITH HOTLINES** detect fraud more quickly and have lower losses than organizations without hotlines.



## ↖️ 📈 SCHEMES



**8%** of fraud cases involved the use of **CRYPTOCURRENCY**

**CORRUPTION** was the most common scheme in every global region



## VICTIM ORGANIZATIONS

### TOP 5 MEDIAN LOSSES BY INDUSTRY



Organizations with the **FEWEST EMPLOYEES** had the highest median loss (150K)



## PERPETRATORS

**NEARLY HALF** of all occupational frauds came from these four departments:



displayed **AT LEAST ONE** behavioral red flag of fraud



Only **6%** of perpetrators had a prior fraud conviction

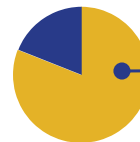


## ANTI-FRAUD CONTROLS

Nearly **HALF** of cases occurred due to:



Lack of internal controls **29%** OR Override of existing controls **20%**



**81%** of victim organizations **MODIFIED** their anti-fraud controls following the fraud.





# FEATURED RESOURCES AND REPORTS



## **Compensation Guide for Anti-Fraud Professionals**

The 2022 *Compensation Guide for Anti-Fraud Professionals* benchmarks salary and benefits across several categories, including industry, experience, certification and many others, and it is free for ACFE members. Data compiled in this year's report revealed that CFEs earn 17% more than their non-certified counterparts.

[Download your copy](#) of this year's report.

## **Managing Fraud Risks in the Evolving ESG Environment**

The ACFE, in partnership with Grant Thornton, created *Managing Fraud Risks in an Evolving ESG Environment* to help organizations and anti-fraud professionals understand the internal and external fraud risks presented by the emergence of environmental, social and governance issues.

[Learn more](#) about ESG fraud risk issues.

## **Anti-Fraud Technology Benchmarking Report**

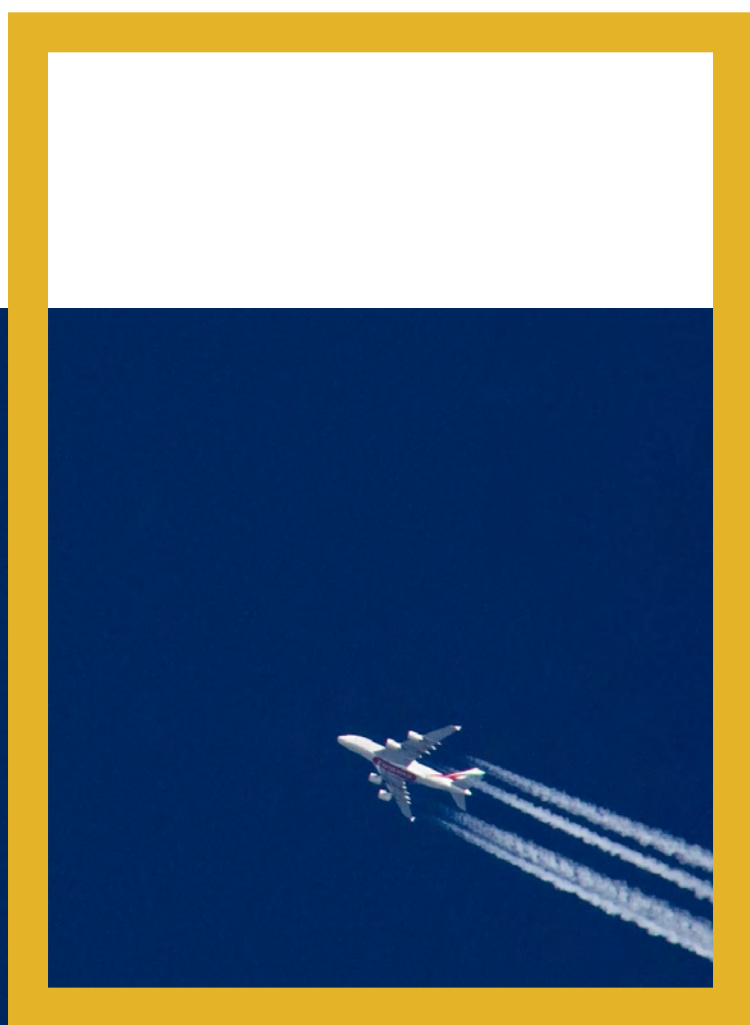
Harnessing the power of data and technology is crucial in the evolving fight against fraud. The *Anti-Fraud Technology Benchmarking Report* was developed by the ACFE in partnership with SAS to help organizations evaluate anti-fraud technologies and identify implementation strategies to remain one step ahead of potential fraud perpetrators.

[Explore the latest findings](#) on anti-fraud technologies.



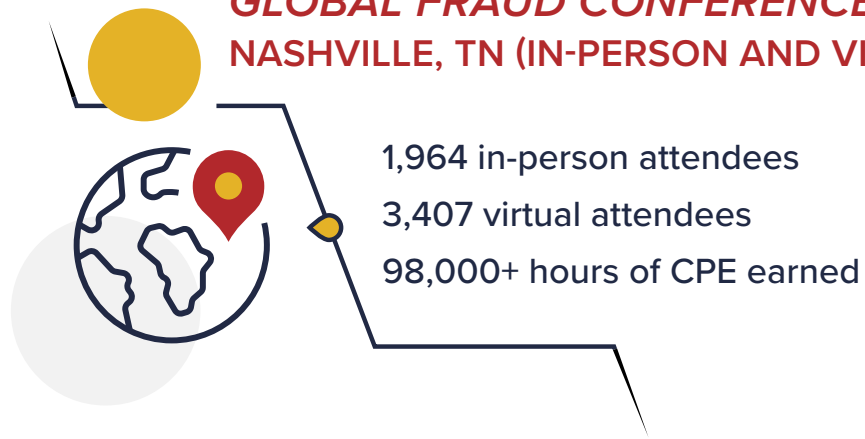
# RETURN TO IN-PERSON EVENTS

Throughout 2022, the return to in-person events brought anti-fraud professionals back together while maintaining health and safety protocols. With virtual attendance options available at many ACFE conferences, summits, webinars and workshops, the ability to collaborate digitally provided members even more opportunities to network with colleagues, hear from industry leaders and earn CPE in the process.



The 33rd Annual ACFE Global Fraud Conference held in Nashville, Tennessee, drew **the largest and most inclusive crowd** for an annual conference hosted by the ACFE in the organization's history.

### 33RD ANNUAL ACFE GLOBAL FRAUD CONFERENCE NASHVILLE, TN (IN-PERSON AND VIRTUAL)



### 2022 ACFE WOMEN'S SUMMIT NEW YORK, NY (HYBRID)



### 2022 ACFE FRAUD CONFERENCE EUROPE VIRTUAL EVENT



### 2022 ACFE FRAUD CONFERENCE MIDDLE EAST ABU DHABI, UAE (IN-PERSON EVENT)



**2022 ACFE FRAUD CONFERENCE ASIA-PACIFIC  
SINGAPORE (IN-PERSON EVENT)**



142 attendees  
1,817 hours of CPE earned

**2022 ACFE FRAUD CONFERENCE CANADA  
TORONTO, ON (IN-PERSON)**



150 attendees  
1,887 hours of CPE earned

**2022 ACFE GOVERNMENT ANTI-FRAUD SUMMIT  
VIRTUAL EVENT**



167 attendees  
1,153 hours of CPE earned

**2022 ACFE ANTI-FRAUD SUMMIT  
NEW YORK, NY (IN-PERSON)**



102 attendees  
281 hours of CPE earned




# ACFE CHAPTERS

ACFE local chapters are organized by dedicated members who reside in a particular geographic region and share an interest in the detection and deterrence of fraud. Joining your local chapter provides many benefits including:



Join your local chapter or [learn how you can start one in your area.](#)

## Chapter Spotlight



### JOIN YOUR LOCAL CHAPTER


**196** chapters worldwide

More than **2,800** CPE credits earned

Chapter of the Year: **SOUTH FLORIDA CHAPTER**

Chapter Website of the Year: **NEW YORK CHAPTER**

Gate closes 20 minutes before departure



ACFE


### ECONOMY

NAME OF PASSENGER  
**CHAPTER SPOTLIGHT**

From **PARIS**  
To **NEW YORK**

FLIGHT DATE  
SU 6329 17 SEP

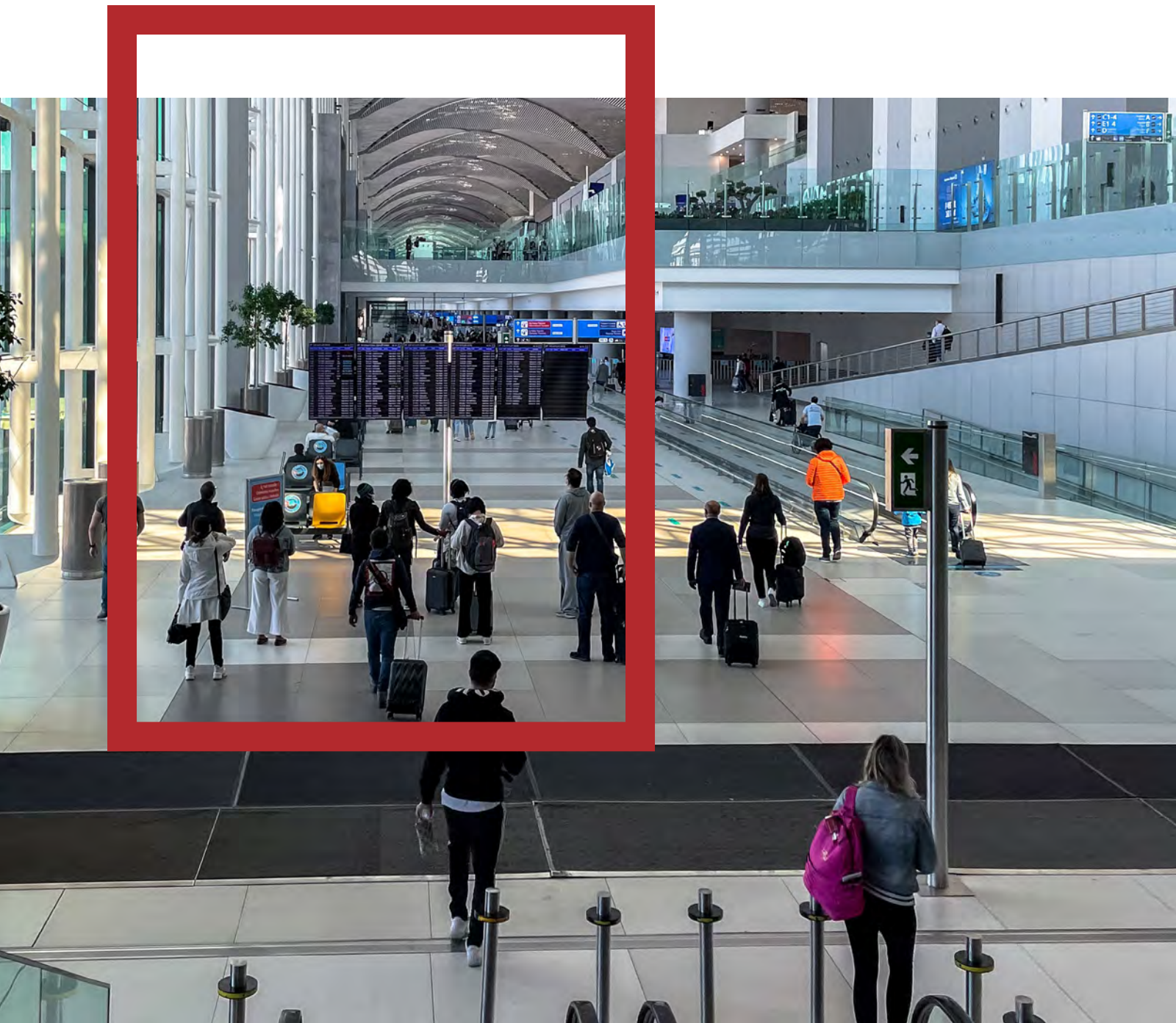
GATE BOARDING TIME SEAT  
B05 18 : 05 24A

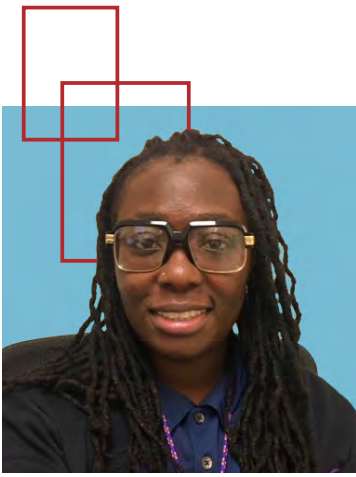




# ACFE FOUNDATION

Your donations to the ACFE Foundation directly impact students and the anti-fraud community. In 2022, ACFE members donated generously to the ACFE Foundation to foster the growth of new professionals entering the anti-fraud profession and to support vital research. By donating to the ACFE Foundation, you support your fellow anti-fraud professionals and the next generation of fraud fighters through the [Ritchie-Jennings Memorial Scholarship](#), the [ACFE Research Institute](#) and other educational projects.





Diana Muyibi, CFE

Diana Muyibi, CFE, is a past recipient of the Ritchie-Jennings Memorial Scholarship and a graduate of State University of New York (SUNY), Old Westbury. Echoing how contributions fostered her own growth, Diana said, “Being recognized by the ACFE Foundation has been an honor and a great privilege, and, as a member, I will forever be motivated by its service to the global community and anti-fraud professionals around the world.”

In addition to supporting the Ritchie-Jennings Memorial Scholarship program, your contributions also fund cutting-edge research that enhances the common body of knowledge for our profession. Through the ACFE Research Institute, your gift helps provide financial support for academic research on issues that are critical to anti-fraud professionals, helping us develop better tools and information to prevent, detect and deter fraud.

In 2022, donations to the ACFE Foundation totaled **more than \$254,000**. Thank you to all who helped reach this incredible milestone!







**COMMITMENT TO  
THE COMMUNITY**

## Diversity, Equity and Inclusion

The ACFE community is a diverse group of individuals from around the world. More than 91,000 members make up our anti-fraud community — each with their own identities, experiences, opinions and contributions to share. This diversity makes our profession undoubtedly stronger. Diverse and inclusive teams make better business decisions, are more innovative, and ultimately, outperform those with less diversity. In 2022, you and your fellow ACFE members have helped push for true diversity, equity and inclusion through your participation in a number of DEI-focused webinars and conference sessions.

## Women in the Anti-Fraud Profession

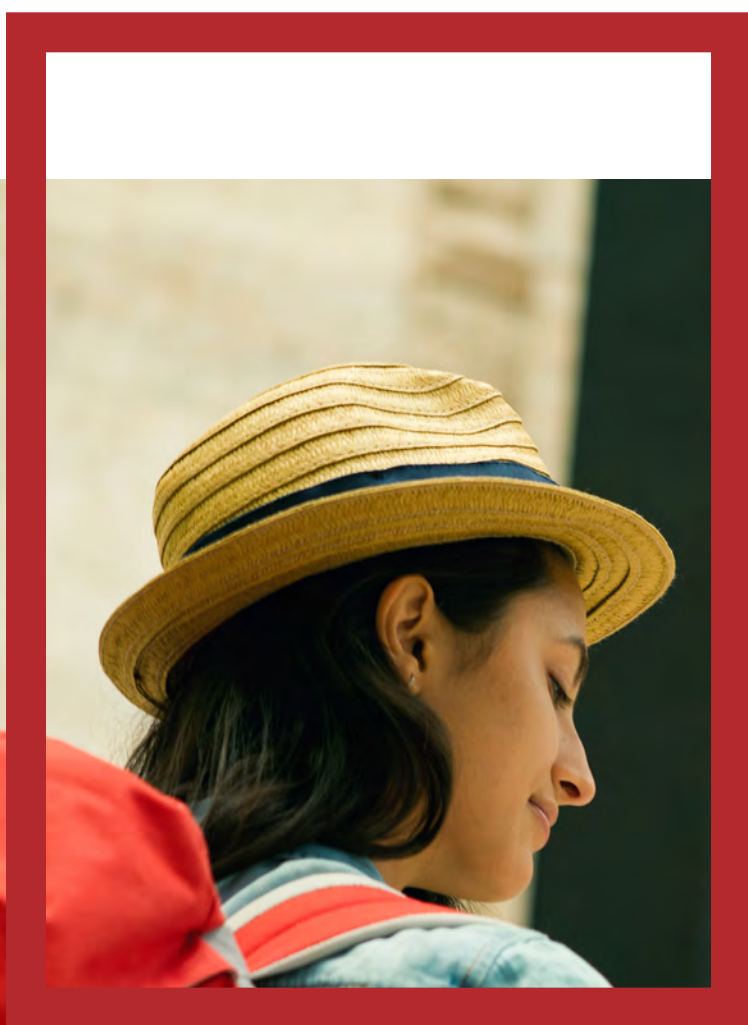
This group is an online space, open to all ACFE members regardless of gender, to discuss common challenges, ask questions, share ideas and resources, and support one another. With **more than 1,200 members** and growing, this group has quickly become a truly global online networking space for women in the anti-fraud profession.

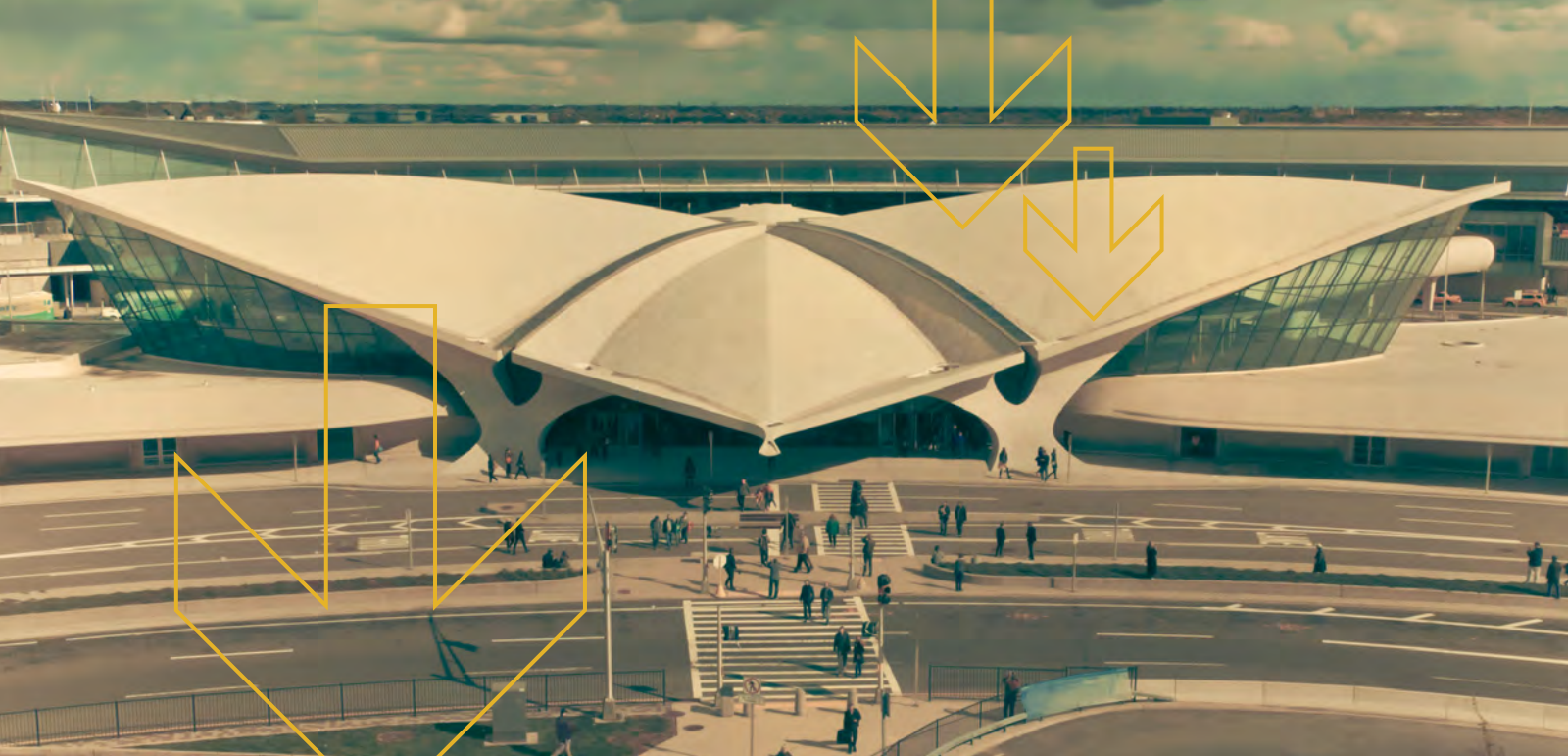
In 2022, women and allies joined together for the first in-person [ACFE Women's Summit](#) following last year's virtual event.



# MENTORING PROGRAM

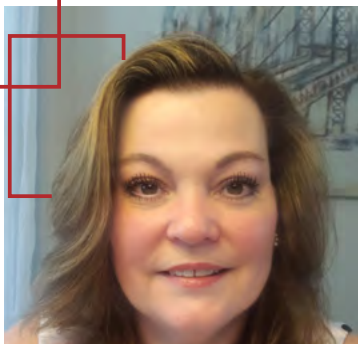
The ACFE Mentoring Program connects ACFE members to anti-fraud professionals from all over the world who can offer a wealth of resources, experience, advice and guidance. Connecting one-on-one with a fellow member — from any part of the world — gives you the opportunity to both share your wisdom with others and learn from leaders in the field. It's a great way to develop yourself professionally, just like Holly and Caroline.





Caroline Kaye, CFE

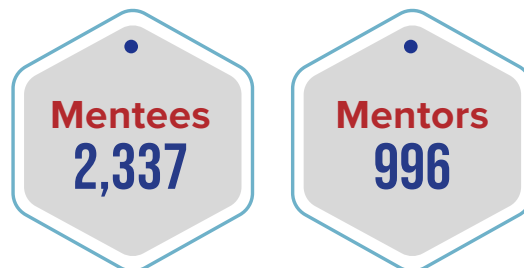
Caroline: “The most rewarding part has been getting to know Holly. Every time we meet, we spend time talking about our lives and families. Holly has given me great career advice, but more than that, she has been such a support system as I’ve had to push back studying for my growing family. She never once has made me feel like a failure for not meeting my original test taking goal, but instead was a great support for helping me get back on track. We’ve really developed a great relationship that will carry on after our official mentorship is over.”



Holly Atkins, CFE

Holly: “Knowing that Caroline is aware she can reach out with any questions — and when she passes the CFE it will be because she was committed and worked really hard. I love seeing how proud people are when they pass the CFE.”

## Total Participants in 2022

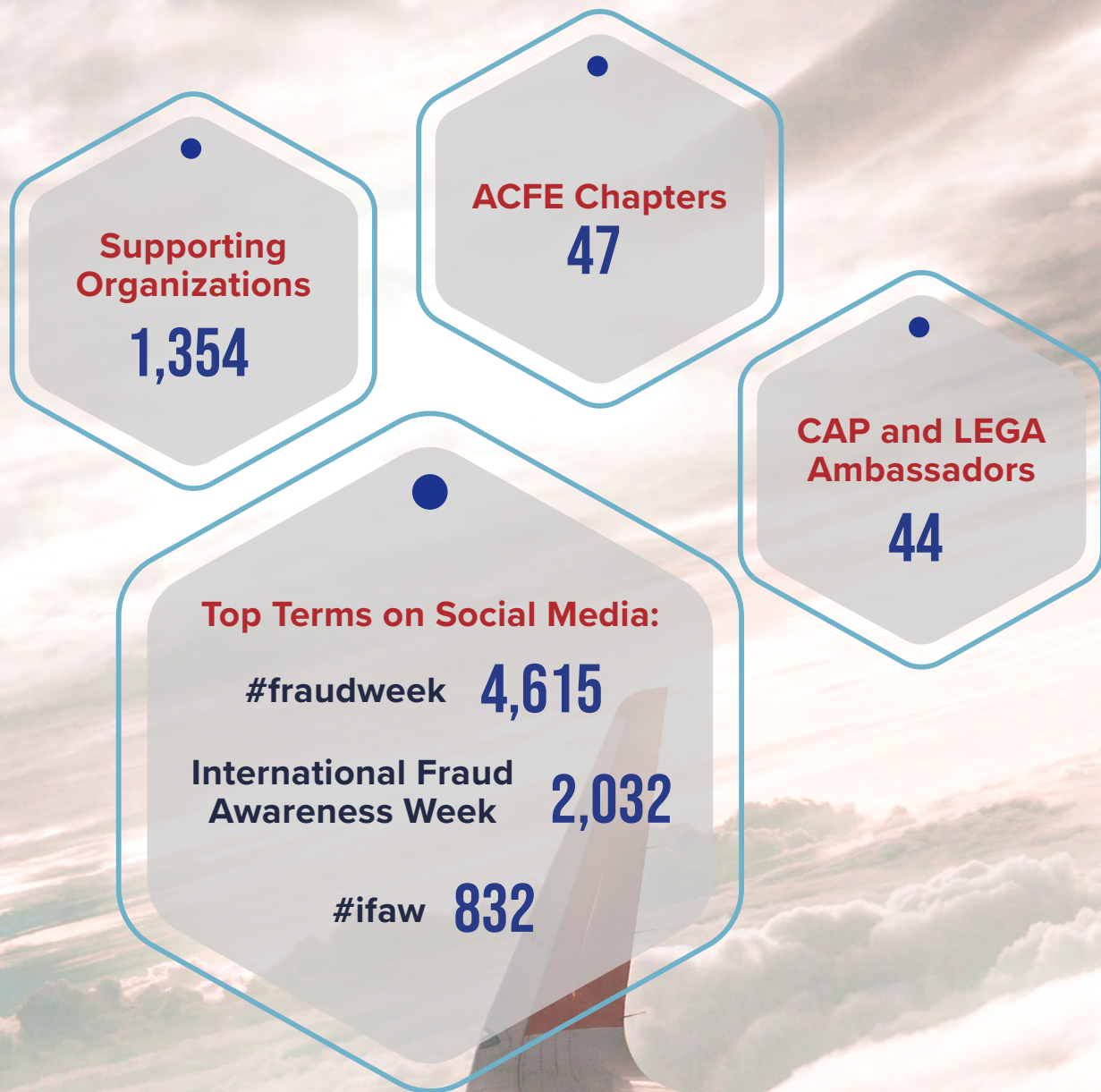




# FRAUD WEEK 2022

International Fraud Awareness Week provides an opportunity to start discussions amongst peers, coworkers, executives and stakeholders in communities and organizations about the importance of fraud prevention.

In 2022, **1,354 organizations from 114 countries** pledged their support for Fraud Week, sharing infographics, educational videos and more to spread awareness both in-person and virtually. A record number of ACFE local chapters, members of the ACFE Corporate Alliance program (CAP) and members of the ACFE Law Enforcement and Government Alliance (LEGA) stepped up to organize trainings and discussions to raise fraud awareness for their groups.



# 2022 AWARD WINNERS

Every year, the Association of Certified Fraud Examiners (ACFE) recognizes the outstanding achievements of anti-fraud professionals around the globe. The ACFE Awards embody the very best of our profession and honor the efforts of people whose goal is protecting businesses and individuals alike from fraudsters.



# 2022 AWARD WINNERS



**Cressey Award:**  
Tony Kwok



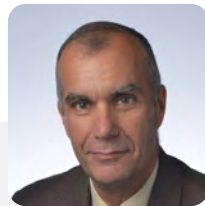
**Cliff Robertson  
Sentinel Award:**  
Pavandeep Gill



**CFE of the Year:**  
Vincent Walden



**Outstanding  
Achievement in Community  
Outreach and Service:**  
Ronald Catania



**James R. Baker  
Speaker of the Year:**  
Tom Caulfield



**Hubbard Award:**  
Brandi Pritchard



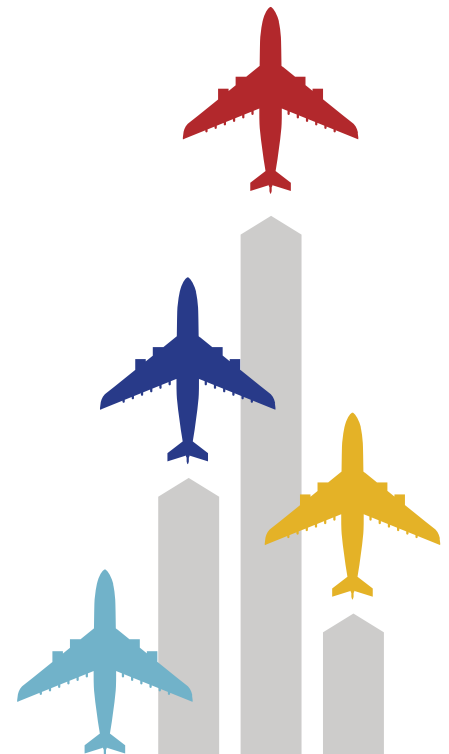
**Guardian Award:**  
Alex Gibney



**Educator of the Year:**  
David Glodstein



**ACFE Hall of  
Fame Inductee:**  
Martin Biegelman





# WHAT'S AHEAD IN 2023



## 34TH ANNUAL ACFE GLOBAL FRAUD CONFERENCE

June 11-16, 2023  
Seattle, Washington

## UPDATED FRAUD RISK MANAGEMENT GUIDE

In collaboration with The Committee  
of Sponsoring Organizations of the  
Treadway Commission (COSO)

## PARTNERSHIP WITH THE INSTITUTE OF INTERNAL AUDITORS (IIA)

- Six-part, joint webinar series
- *IIA Whistleblowing Report*

## PEER-TO-PEER LEARNING

- Industry-specific roundtables
- Executives leadership forums



Association of Certified Fraud Examiners

[www.acfe.com](http://www.acfe.com)